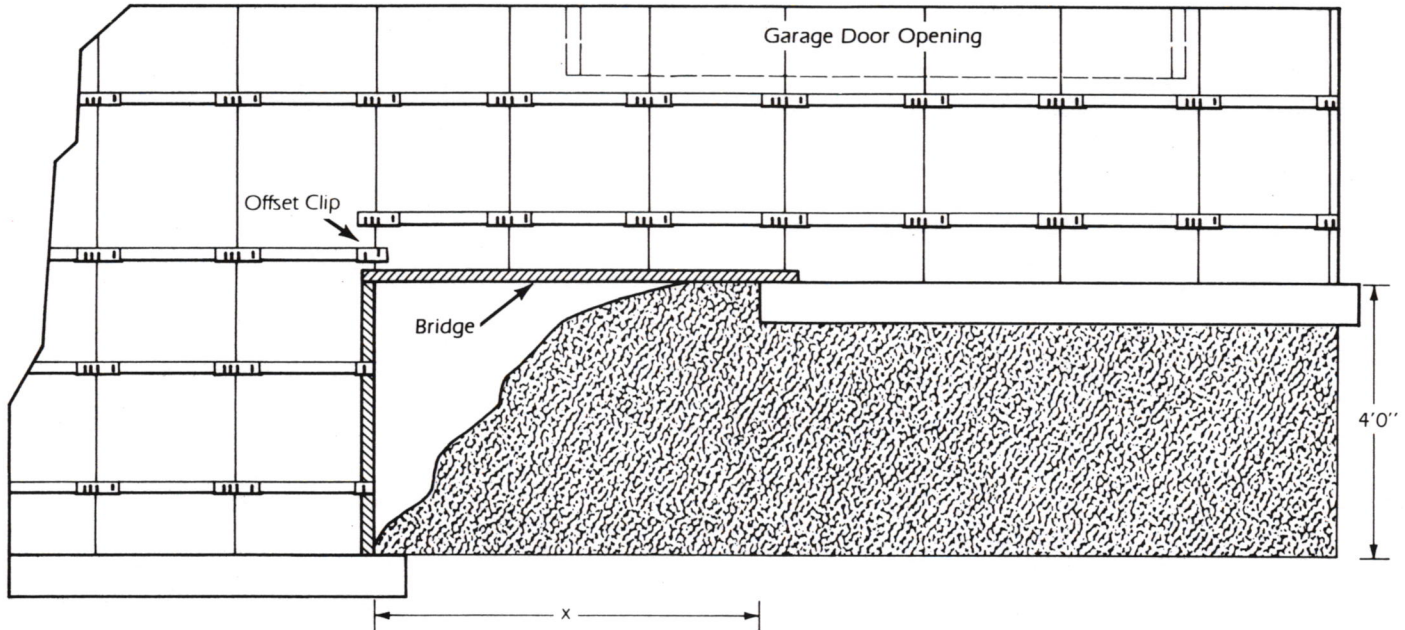


ADVANCE

CONCRETE FORM, INC.



FORMING AN ATTACHED GARAGE

Forming an attached garage is no problem when using the Advance system. If possible, set garage footings exactly 4' higher than basement footing. This way a 4' panel will conveniently fit the basement forming. Make sure the forms are securely together, and try to keep the horizontal bridge length (the X length) as short as possible.

WALL THICKNESS CHANGE

Many plans call for a wall thickness change. These changes usually occur at a "T", and usually the change is by 2". With Advance forms these changes are made simple. By merely using different combinations of inside corners and fractions, almost any change can be accomplished. Just as the Advance forms accommodate any wall thickness, they can form any kind of corner.

ADVANCE CONCRETE FORM, INC.

5102 Pflaum Rd., Madison, WI 53718

800-356-2202

WI 608-222-8684

Fax 608-222-3693